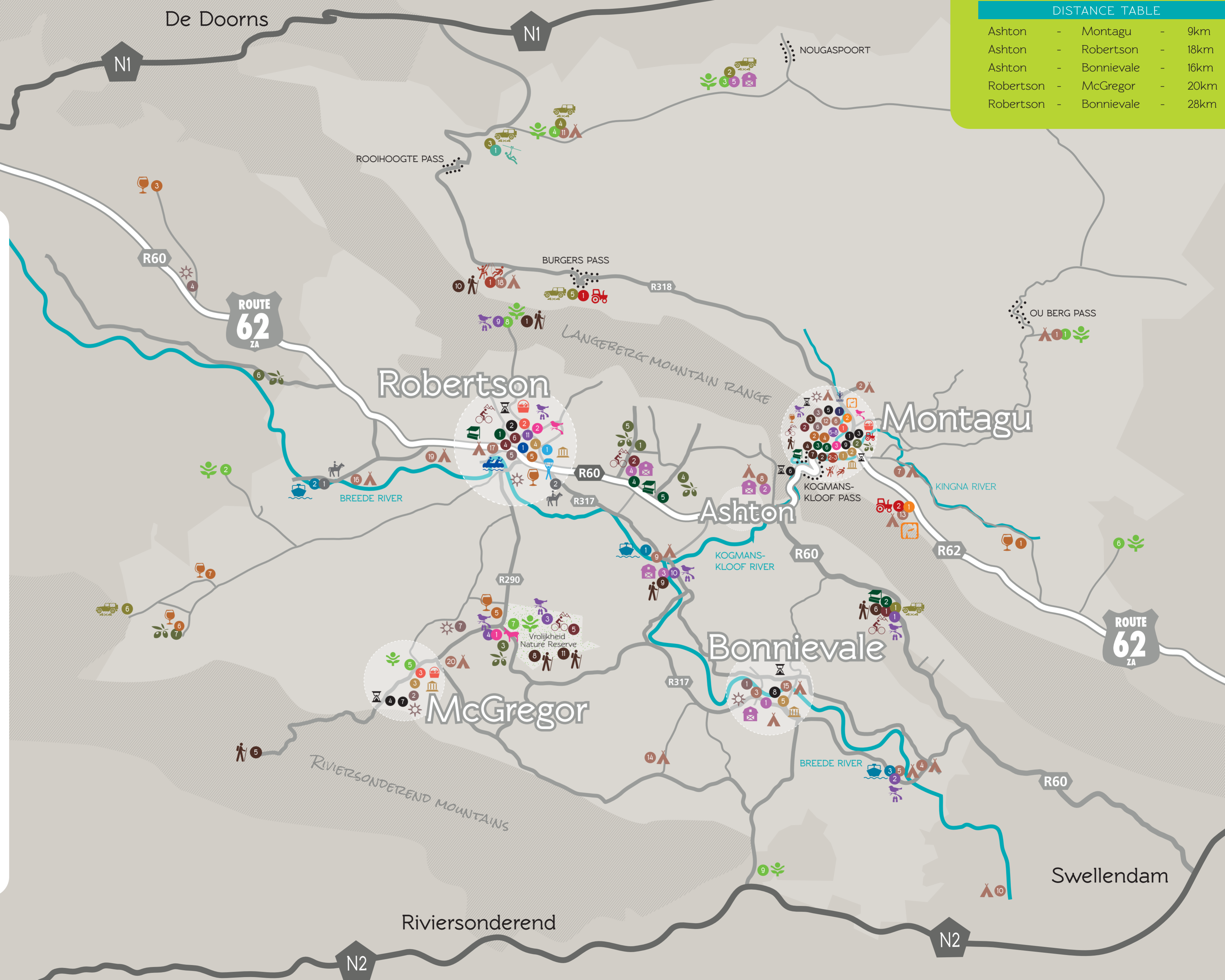




ACTIVITIES

- CAMP SITES
- GAME & NATURE RESERVES
- FARM TOURS
- RIVER CRUISES
- HIKING TRAILS
- TRACTOR TRIPS
- RIVER RAFTING/CANOING
- MOUNTAIN CLIMBING/ABSAILING /KLOOFING
- SKYDIVING
- MTB TOURS
- FARM STALLS
- FARMER'S MARKETS
- OLIVE
- MUSEUMS
- HISTORIC BUILDINGS
- 4 X 4
- BIRD WATCHING
- HORSE RIDING
- DISTILLERIES
- ZIP SLIDE
- CAVES
- DONKEY/BIRD SANCTUARY
- HOT SPRINGS
- OTHER

DISTANCE TABLE		
Ashton	- Montagu	- 9km
Ashton	- Robertson	- 18km
Ashton	- Bonnievale	- 16km
Robertson	- McGregor	- 20km
Robertson	- Bonnievale	- 28km



MAP NOT TO SCALE

CAMP SITES

- African Game Lodge** | GPS: S33°43'23.70" E20°21'07.84"
023 614 3176 • 072 3503 924
info@africangamelodge.co.za
- Badensfontein** | GPS: S33°44.53 E20°62.95
023 614 2187 • 079 9897 241
info@badensfontein.co.za / pierrebaden@breede.co.za
- Bonnievale River Lodge** | GPS: S33°56'38.3" E20°04'37.4"
023 616 3803 • 083 6551 973
bonnievaleriverlodge@gmail.com
- Breede Escape River Camps** | S33° 58' 99.7" E20° 11' 50.6"
0828957951 • info@breedeescape.co.za
www.breedeescape.co.za
- Breede River Goose Camp Site** | GPS: S33°58'47.26" E20°08'51.11"
023 616 2175 • 082 7595 727
breederivergoose@xsinet.co.za
- De Bos**
071 462 8812 • info@debos.co.za • www.debos.co.za
- Doringlaagte** | GPS: S33°47'30.64" E20°1'005.65"
023 614 2034 • 082 3195 130
doornlaagte@compuserVICES.co.za
- Farmer Redbeard** | GPS: S33°47'47.78"0 E20°03'15.21"
023 615 1204 / 084 205 6166
info@farmerredbeard.co.za • www.farmerredbeard.co.za
- Goudmyn River Chalets** | GPS: S33°52.196 E19°59.814
082 3249 574
goudmynriverchalets@barvallei.co.za • goudmynriverchalets.co.za
- Kam'Bati River Resort** | GPS: S34°04'47.82" E20°17'06.66"
0792009098 • info@kambati.co.za • www.kambati.co.za
- Leeuenboschfontein** | GPS: S33°56'76.95" E19°98'65.81"
023 358 1722 • 082 8915 911 • lbf@cornergate.com
- Montagu Caravan Park** | GPS: S33°47.25" E20°6.79"
023 614 3034 • 082 9207 863
montagucp@gmail.com • www.montagucaravanpark.co.za
- Montagu Guano Caves** | GPS: S33°49.438' E20°10.564'
084 5534 187 • 074 2007 292
admin@montaguguanocave.co.za
yolande@montaguguanocaves.co.za
- Night Sky** | GPS: S34°01'03.17" E19°54'14.20"23
023 616 2661 • nightsky@breede.co.za
- Rignton River Farm** | GPS: S33°56'28.98" E20°5'39.42"
082 7822 697
abester@lando.co.za
- Rivierzicht Camping** | GPS: S33°50.423 E19°45.129
023 626 2013 • 084 8119 062
rivierzichtresort@barvallei.co.za
- Silverstrand Caravan Park** | GPS: S33°48.677 E19°51.241
023 626 3321 • 076 1994 085
montagu@telkomsa.net / manager@silverstrand.co.za
www.silverstrandcaravanpark.co.za

- Simonskloof Mountain Retreat** | GPS: S33°36'57.2"E19°43'38.9"
023 626 4133
sheilam@simonskloof.com
- Skurwekop Camp Site** | GPS: S33°49 06' 45 S19° 48 20'72
023 626 5588 • 082 771 3692
info@skurwekop.co.za
www.skurwekop.co.za
- Uitvlugt** | GPS: S33°40'44.76" E19°50'44.52"
023 625 1910
076 1206 868

GAME/ NATURE RESERVES

- African Game Lodge** | GPS: S33°43'23.70" E20°21'07.84"
023 614 3176 • 072 3503 924
info@africangamelodge.co.za
- Amathunzi Nature Reserve** | GPS: S33°51'44.1" E19°38'54.7"
023 348 5686 • 079 9136 111
mail@amathunzi.co.za • www.amathunzi.co.za
- Drie Kuilen** | GPS: S33°34'53.2095" E20°01'55.9058"
023 358 2205 • 082 4164 804
bookings@driekuilen.co.za
- Desert Wind Private Game Farm**
GPS: S33°35'59.8" E20°13'38.0"
021 8631 386 • 083 3033 532
info@desertwind.co.za
- Krans**
023 625 1954
info@tourismmgregor.co.za
- Sanbona** | GPS: S33°43'36.679" E20°36'2.323"
021 010 0028 • reservations@sanbona.com
- Vrolijkheid Nature Reserve** | GPS: S33°55'3.84" E19°52'39.04"
083 699 9229 • 021 483 0190
vrolijkheid@capenature.co.za
- Dassieshoek Nature reserve**
023 626 8200 • trailbookings@langeberg.gov.za
- Melozhori** | GPS: 34°02'38.08"S 20°05'13.00"E
021 699 0950 (ask for Zulfaa)
info@melozhori.co.za • melozhori.co.za

FARM TOURS

- Amanzi Farm Visits**
084 5804 497
info@amanzicottages.co.za
www.amanzifarmvisits.co.za
- Farmer Redbeard** | GPS: S33°48'31" E19°51'45"
023 615 1204 • 084 5774 462
info@farmerredbeard.co.za
- Van Loveren Garden and Cellar Tours**
GPS: S33°52'31.3" E20°0'9.1"
023 615 1505
info@vanloveren.co.za
www.vanloveren.co.za

- Sheilam Nursery and Cactus and Succulent Garden**
023 626 4133
sheilam@lando.co.za
www.sheilamnursery.com
- Drie Kuilen** | GPS: S33°34'53.2095" E20°01'55.9058"
082 4164 804
bookings@driekuilen.co.za
- Viljoensdrift** | GPS: S33°52'8.4" E19°59'13.6"
023 615 1017 • 023 615 1901
info@viljoensdrift.co.za / rivercruises@viljoensdrift.co.za
- Kolgans River Boat** | GPS: S33°50'10.4" E19°44'8.5"
023 626 2012 • 082 8234 231 • 082 7442 580
info@merinaguestfarm.com • www.merinaguestfarm.com
- River Goose Boat Trips** | GPS: S33°58'47.26" E20°08'51.11"
023 616 2175 • 082 7595 727
breederivergoose@xsinet.co.za

HIKING TRAILS

- Arangieskop Hiking Trail (20.9km)**
023 616 8000 • trailbookings@langeberg.gov.za
- Aasvoëlkrans Hiking Trail (3.2km)**
023 614 2471 • info@montagu-ashton.info
- Bloupunt Hiking Trail (15.6km)**
023 614 2471 • info@montagu-ashton.info
- Badskloof Hiking Trail (2.2km)**
023 614 2471 • info@montagu-ashton.info
- Boesmanskloof Greyton Trail (14km)**
GPS: S33°55'3.84" E19°52'39.04"
Vrolijkheid Nature Reserve
083 699 9229 • 021 483 0190
vrolijkheid@capenature.co.za / pvzyl@capenature.co.za
- Bonfrutti** | GPS: S33°55'20.40" E20°11'52.63"
084 5492 924 • 084 5819 687
info@bonfrutti.co.za
- Cogmanskloof Hiking Trail (12.1km)**
023 614 2471
info@montagu-ashton.info
- Rooikat Hiking Trail (25.3km)** | GPS: S33°55'3.84" E19°52'39.04"
Vrolijkheid Nature Reserve
083 699 9229 • 021 483 0190
vrolijkheid@capenature.co.za / pvzyl@capenature.co.za
- Fish Eagle (8km)** | GPS: S33°52'31.3" E20°0'9.1"
023 615 1505 • info@vanloveren.co.za
- Gecko Hiking trail** | GPS: S 33°36'57.20"E 19°43'38.80"
Distance 30km (16.5 & 14.5km)
023-614 1895 • info@geckotrail.co.za
- Heron Trail (3km)** | GPS: S33°55'3.84" E19°52'39.04"
Vrolijkheid Nature Reserve
083 699 9229 • 021 483 0190
vrolijkheid@capenature.co.za / pvzyl@capenature.co.za

TRACTOR TRIPS

- Montagu Protea Farms** | GPS: S33°42,169" E19°52,937"
023 614 3012
info@proteafarm.co.za
www.proteafarm.co.za
- Montagu Guano Caves** | GPS: S33°49.438" E20°10.564"
084 5534 187 • 074 2007 292
admin@montaguguanocave.co.za
yolande@montaguguanocaves.co.za
www.montaguguanocave.co.za

RIVER RAFTING

- Rafting Route 62 (Robertson Backpackers)**
023 626 1280 • 072 4475 991
info@robertsonbackpackers.co.za

MOUNTAIN CLIMBING/ ABSAILING /KLOOFING

- Simonskloof (Jurgen Wohlfarter)**
GPS: S33°36'57.2" E19°43'38.9"
023 614 1895
info@simonskloof.com
- Climb SA (Justin Lawson)**
023 614 3193 • 082 6964 067
info@climbing.co.za
www.climbing.co.za
- Montagu Climbing**
45 Mount Street, Montagu
0826964067 • info@montaguclimbing.co.za
www.montaguclimbing.com

SKY DIVING

- Robertson Skydive** | GPS: S33°48'46.55" E19°54'3.78"
082 7078 107 • 021 462 5666
bookings@skydive.co.za
www.skydive.co.za

MTB ROUTES & BIKE HIRE

- MTB Route Maps for McGregor, Montagu & Robertson available at the Tourism Offices**
- Bonfrutti** | GPS: S33°55'20.40" E20°11'52.63"
084 5492 924 • 084 5819 687 • info@bonfrutti.co.za
 - McGregor Cycle Hire**
023 625 1954 • info@tourismmgregor.co.za

HORSE RIDING

- Burcon Horse Trail Rides at Nerina Guest Farm**
023 626 2012
082 7442 580
info@nerinaguestfarm.co.za
- Robertson Riding School**
023 626 3503
082 4027 088 • 072 2917 631
hansie@myisp.co.za

BREWERIES/DISTILLERIES

- Kingna Brandy Distillery** | GPS: S33°49'45.87" E20°15'39.10"
082 023 614 1472 • 083 3091 177
info@kingna.co.za
- Mystic Tin & Karoo Brewery** | GPS: S33°47'13.6" E20°7'12.7"
074 8863 521
023 614 2461
janeym@hotmail.co.za
- Saggy Stone** | GPS: S33°41'35.6" E19°43'05.6"
083 4533 526 • 072 5507 602
info@saggystone.co.za
- Route62 Brewing Company**
18 Church Street, Montagu
082 452 4835
info@route62brewingcompany.co.za
www.route62brewingcompany.co.za
- Tanagra Grappa Distillery**
023 625 1780 • 076 112 5490
tanagra@tanagra-wines.co.za
- Windfall Wine Farm** | S33° 56' 33.37" E19° 38' 42.98"
083 320 8473 • info@windfallwine.co.za
www.windfallwine.co.za
- Sumsaré Wines in Wandsbeck** | S33° 54' 18.00" E19° 40' 04.75"
023 626 2152 • sumsare.wines@barvallei.co.za
www.sumsarewines.co.za

CAVES

- Montagu Guano Caves** | GPS: S33°49.438" E20°10.564"
084 553 4187
admin@montaguguanocave.co.za
yolande@montaguguanocaves.co.za
www.montaguguanocave.co.za
- Avalon Springs Hotel** | GPS: S33°45'56.94" E20°07'02.76"
023 614 1150
reservations@avalonsprings.co.za

- Van Loveren MTB Trail** | GPS: S33°52'31.3" E20°0'9.1"
023 615 1505 • info@vanloveren.co.za
- M.T.B. Rooiberg Cycle Vivian Kuiper**
082 9509 364 • 023 626 3591
chamrox@telkomsa.net
- Vrolijkheid Nature Reserve** | GPS: S33°55'3.84" E19°52'39.04"
083 699 9229 • 021 483 0190
vrolijkheid@capenature.co.za
- Robertson Backpackers cycle hire**
023 626 1280 • 072 4475 991
info@robertsonbackpackers.co.za

FARM STALLS

- Affieplaas Farm Stall**
R60 just before entering Robertson
023 626 4567 • info@affieplaas.co.za
- Bonfrutti** | GPS: S33°55'20.40" E20°11'52.63"
084 5492 924 • 084 5819 687 • info@bonfrutti.co.za
- Kloof Padstal**
R62 just before entering Montagu
023 614 2209 • klooffarmstall@telkomsa.net
www.diekloofpadstal.co.za
- Agter die Dam**
R60 between Robertson and Ashton
023 626 4373
- Klein Parys Farm Stall**
R60 between Robertson and Ashton
023 626 1172 • 082 3343 477
Kleinparys.joubert@gmail.com
- The Rambling Rose**
36 Long Street
083 401 4503
ramblingrosemontagu@gmail.com
- Capedry Dried Fruit Farmstall**
102 Bath Street, Montagu
023 614 1134
www.capedriedfruit.com
- Platform 62** | GPS: S33°49'96" E20°3'87"
023 615 1834
info@platform62.co.za
www.platform62.co.za

ZIP SLIDE

- Karoo Adventures Zip Slide**
023 358 1869 • 083 334 8566
info@karooadventures.co.za
www.karooadventures.co.za

MORNING/VILLAGE MARKETS

- Montagu Village Market**
Euvrad Park, Bath Street, Montagu
023 614 2471
mareletta@oudadvertising.co.za
- Robertson Farmers Market** | GPS: S33°48'31" E19°51'45"
084 568 2780
robertsonmarket@gmail.com
- McGregor Saturday Morning Market**
GPS: S33°56'54.87" E19°49'36.63"
023 625 1954 • 023 625 1387
info@tourismmgregor.co.za

OLIVE ROUTES/TASTING

- Owl's Rest** | 33°47'47.0"S 19°59'00.8"E
083 378 6366 | 023 626 1284 (A.H. only)
owlsrestza@gmail.com • owlsrest.co.za
- Mirihof Olive Tasting and Products**
GPS: S33°47'23.7" E20°06'49.4"
023 614 2512 • 082 9287 989
info@minhof.co.za
www.minhof.co.za
- Rhebokskraal Olive Estate** | GPS: S33°58'03.3" E19°49'57.9"
023 625 1951 • 082 8960 429
info@rhebokskraalolives.co.za
www.rhebokskraalolives.co.za
- Mabrin Olive Tasting and Products** | GPS: S33°48'45" E20°00'22"
073 840 8228 • mabrnfarm@gmail.com
- Igadi Olive Oil**
023 626 2028 • 082 4485 393
info@igadi.biz
- Olyfberg Olives** | GPS: S33°45'33" E19°36'44"
023 342 5096 • 073 267 4685
Olyfberg@breede.co.za
www.olyfberg.co.za
- Windfall** | S33° 56' 33.37" E19° 38' 42.98"
083 320 8473
info@windfallwine.co.za
www.windfallwine.co.za

MUSEUMS

- Montagu Museum**
023 614 1950
41 Long Street, Montagu
museum@telkomsa.net
- Joubert House**
023 614 1774
Long Street, Montagu
jouberthuis@cybersmart.co.za
- McGregor Museum**
53 Voortrekker Road, McGregor
023 625 1954
info@tourismmgregor.co.za

- Robertson Museum**
Paul Kruger Street, Robertson
023 626 3681
robertsonmuseum@gmail.com
- DJ le Roux Museum Bonnievale**
Main Road, Bonnievale
083 2708 490
rozitha@angorastud.co.za

HISTORICAL BUILDINGS/SITES

- Historical Walk through Montagu**
023 614 2471
info@montagu-ashton.info
www.montagu-ashton.info
- Historical Walk About in Robertson**
023 626 4437
info@robertson.org.za
www.robertsonstourism.co.za
- Joubert House Montagu (1853)** | Long Street, Montagu
023 614 1774
jouberthuis@cybersmart.co.za
- McGregor Heritage Society Walks** | S33°94'89.78" 19°83'05.65"
023 625 1976
sheepstor@gmail.com
- Montagu Canon on Kanonkop**
Top of Kohler Street, Montagu
023 614 2471 • info@montagu-ashton.info
- Old English Fort** | GPS: S33°79'09.87 E20°11'11.497
Cogmanskloof Pass between Ashton and Montagu
023 626 2471 • info@montagu-ashton.info
- Old Mill in McGregor**
023 625 1626
bookings@greengablesmgregor.co.za
- Myrtle Rigg Church**
Myrtle Rigg Avenue, Bonnievale
info@bonnievale.co.za
- KWV Museum/Gallery Long Street, Montagu**
023 614 1511
mmuseum@telkomsa.net

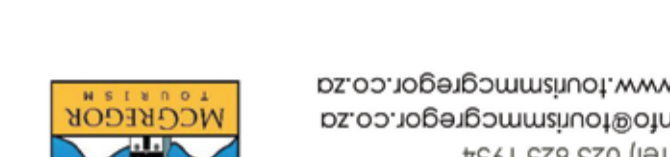
4x4 ROUTES

- Bonfrutti** | GPS: S33°55'20.40" E20°11'52.63"
084 5492 924 • 084 5819 687
info@bonfrutti.co.za
- Drie Kuilen**
023-358 2205 • 082 416 4804
bookings@driekuilen.co.za
- Karoo Adventures**
023 358 1869 • 082 2933 220
info@karooadventures.co.za
www.karooadventures.co.za

- Leeuwenboschfontein** | GPS: S33°56'76.95" E19°98'65.81"
023 358 1722 • 082 8915 911
lbf@cornergate.com
- Protea Farm** | GPS: S33°42,169" E19°52,937"
023 614 3012 • info@proteafarm.co.za
www.proteafarm.co.za
- Tafelkop** | GPS: S33.89764 E19.61447
Contac Zane Beswick
078 329 8412
Agterkliphoogte

BIRD WATCHING SITES

- BONNIEVALE**
- Bonfrutti** | GPS: S33°55'20.40" E20°11'52.63"
084 5492 924 • 084 5819 687
info@bonfrutti.co.za
- Breede River Goose** | GPS: S33°58'47.26" E20°08'51.11"
082 7595 727
breederivergoose@xsinet.co.za
- McGREGOR**
- Vrolijkheid Nature Reserve** | GPS: S33°55'3.84" E19°52'39.04"
083 699 9229 • 021 483 0190
vrolijkheid@capenature.co.za
- Eseltjesrus Donkey Sanctuary**
GPS: S33°55'32.85" E19°51'58.32"
023 625 1593 • 082 4439 024
info@donkeysanctuary.co.za
- MONTAGU**
- Badskloof Hiking Trail**
023 614 2728 • info@montagu-ashton.co.za
- Irrigation Dam (Leidam) Bird Sanctuary**
023 614 2728 • info@montagu-ashton.co.za
- Montagu Nature Garden**
023 614 2728 • info@montagu-ashton.co.za
- Montagu Springs**
023 614 1050 • rob@singergroup.co.za
- ROBERTSON**
- Dassieshoek Nature Reserve**
023 626 8200 • trailbookings@langeberg.gov.za
- Birding Route at Van Loveren** | GPS: S33°52'50.2" E20°00'15.3"
023 615 1505 • mzimmi@langeberg.gov.za
- Robertson Birding**
083 7428 162 • maurits@roodezandt.co.za



CONTACT OUR TOURISM OFFICES FOR MORE INFORMATION REGARDING WINE, RESTAURANTS AND ACCOMODATION

ASHTON BONNIEVALE MCGREGOR MONTAGU ROBERTSON



Welcome to Langeberg

ACTIVITY MAP

